

NLCS NEWS

Official newsletter of New Life Christian School
911 E Division, Ephrata, WA 98823
Phone: 509-754-5558 Fax: 509-754-3540

What's coming up!

- Jan. 14 - Ski PE
- Jan. 15 - PVC Meeting
- Jan. 17 - Staff Appreciation
- Jan. 17 - Auction Meeting
- Jan. 18 - Pizza Friday
- Jan. 21 - No School - Martin Luther King Day
- Jan. 24 - End of 2nd Quarter
- Jan. 25 - No School - Records Day
- Jan. 28 - Ski PE
- Feb. 11 - Ski PE



Important: Departure time for Ski PE on Monday, January 14th will be 8 a.m. Please be here on time so that you won't be left behind.

KinderPrep - 2nd grade students, and anyone not attending Ski PE, will still have late start Monday, with classes beginning at 9 a.m.

PIZZA FRIDAY - January 18th

PVC will be serving Pizza for lunch: \$2 for one slice and a Capri Sun juice pouch, \$1 for each additional slice. Juice may be purchased separately for 25 cents.

NLCS CLOTHING ORDER

A clothing order will be placed next week with Sole Performance. If you would like to place an order, please fill out an order form at the office. Thank you!

SKI PE

Our first Ski PE for this year will be NEXT MONDAY, January 14th. Students who are participating in Ski PE need to be ready to leave the school by 8:00 a.m. Please make sure you have warm socks, snow pants, waterproof/ski jacket, gloves, goggles (if you have them), and any additional items to keep warm! Students need to pack a lunch or bring money to purchase lunch at the lodge. Students should be returning to Quincy by 5:00 p.m., and to Ephrata by 5:30 p.m. We're looking forward to a fun day up at Mission Ridge! The other two Ski PE dates will be January 28 and February 11.

Departure time will be 8 am, even though it is late start Monday. Please be here on time so that you won't be left behind.

KinderPrep - 2nd grade students will still have late start Monday.

AUCTION NEWS:

Mark your calendars, the Black and Green Gala, New Life's largest fundraiser of the year is on March 9th at the Community Church of Ephrata. Come and support our school! Tickets will go on sale later this month. The evening features a silent auction, dessert auction, and live auction. There is something there for everyone.

For this to be successful, we need your help. Auction planning meetings are generally held on Thursday afternoons at 3:00 PM. Our next meeting is January 17 at 3:00 PM in the staff room upstairs. It's not too late to begin helping to plan this great event. This is a great way to get your volunteer hours completed, as well as connect with other families in our school.

COLD & FLU SEASON

In order to help prevent the spread of different flu bugs, please keep your child home if they have thrown up within the last 24 hours; they are running a fever of 99 degrees and above; or they have a barking cough. **IMPORTANT:** The 24 hours must be fever-free, vomit-free, etc. with no medication before returning to school. If they are ill or won't be attending school for any reason, please call the office to let us know.

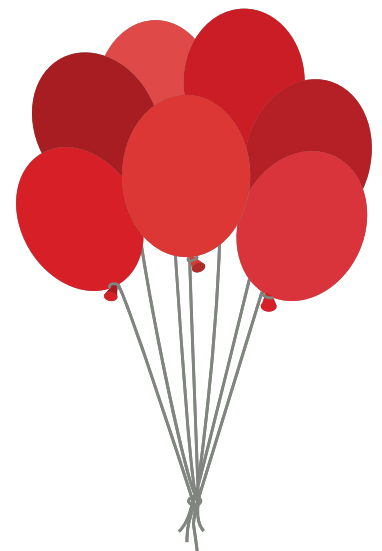
BIRTHDAYS

JANUARY

- January 10
Molly Coomes
- January 15
Myles Lee
- January 15
Mrs. Hussey
- January 27
Judd Saunders
- January 30
Mrs. Johnson
- January 30
Blaise Brewer

FEBRUARY

- February 12
Annalise Schopf
- February 16
Kaylee Addink
- February 16
Kaeden Schulz
- February 18
Lauren Svetich



WENATCHEE WILD "FAITH & FAMILY NIGHT"

Join New Life Christian School at the Wenatchee Wild Hockey's Faith and Family Night on Friday, January 18, 2019 at 7:05 pm.

Tickets are \$12; use the link or call 509-888-7825 to get your discount. ** NOTE: Tickets will NOT be shipped.

GAME DAY: Friday, January 18th @ 7:05pm (doors open 6:05pm)

WHERE: Town Toyota Center, Wenatchee

DEADLINE to PURCHASE the seats reserved for NLCS: on/by end of business January 16, 2019.

Here is the link to purchase tickets:

New Life Christian School

<http://wenatcheewildhockey-com.3dcartstores.com/product.asp?itemid=586>

Games usually last about 2.5 hours, sometimes a bit longer depending.

For more information visit: www.WenatcheeWildHockey.com

POKEMON CARDS:

Please leave your Pokemon cards at home. They have become a distraction in many areas. If students continue to bring them, they will be confiscated and returned to parents at the end of the day. Thank you for your understanding.



STAFF APPRECIATION - January 17th

It takes many people to run the school and deliver high quality rigorous classical Christian education to our children.

Every year, the Parent Volunteer Committed (PVC) leads the “staff appreciation” for our beloved staff at NLCS. Funds are budgeted to cover this effort. This year, the PVC will hold 5 staff appreciations (one per month starting January).

Staff appreciation is a time to proactively show appreciation to staff members at NLCS! When employees and their work are valued, their satisfaction and productivity rises, and they are motivated to maintain or improve their good work. Praise and recognition are essential to an outstanding work place.

The PVC welcomes all parents and students to take a moment next week to thank your NLCS staff for their contributions to the job.

On Thursday, January 17, 2019, staff members will receive their favorite coffee drink and a food treat.

Watch in future Newsletters for the next staff appreciation date in February!

PARENT VOLUNTEER COMMITTEE (PVC) MEETING - January 15th

All parents are welcome to attend. This is a great opportunity to see what is happening behind the scenes with the school from a parent volunteer perspective. Come to this meeting to get “plugged in” to something fun, and connect with other parents.

AGENDA (preliminary):

- Open with Prayer
- JAT awards status/final actions
- PVC financials
- Staff Birthdays status
- Staff appreciation
- Valentine’s Day
- Spring fundraising opportunity

WHEN: Tuesday, January 15th @ 3:05 p.m.

LOCATION: At NLCS in the Staff meeting room (upstairs next to Mrs. Lennon’s classroom)

QUESTIONS: Phone Tony Dymarkowski (425-358-1181) or Text Deanna Dymarkowski (509-761-1128).

NLCS MISSION STATEMENT:

A Christian community partnering with parents to Classically educate generations of students with academic rigor and a Christ-centered worldview to shape culture and cultivate servant leaders.

**Link to ACCS website for more information on the Classical Christian Education provided by NLCS:

<https://classicalchristian.org/>